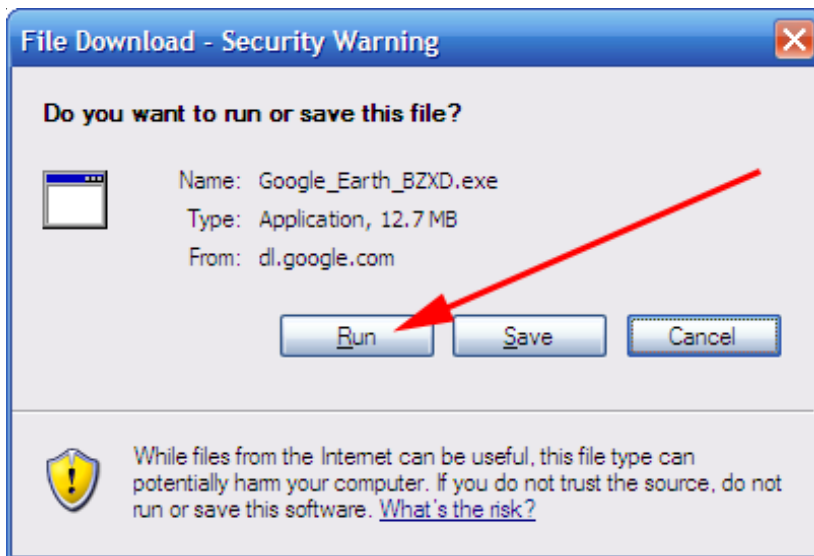


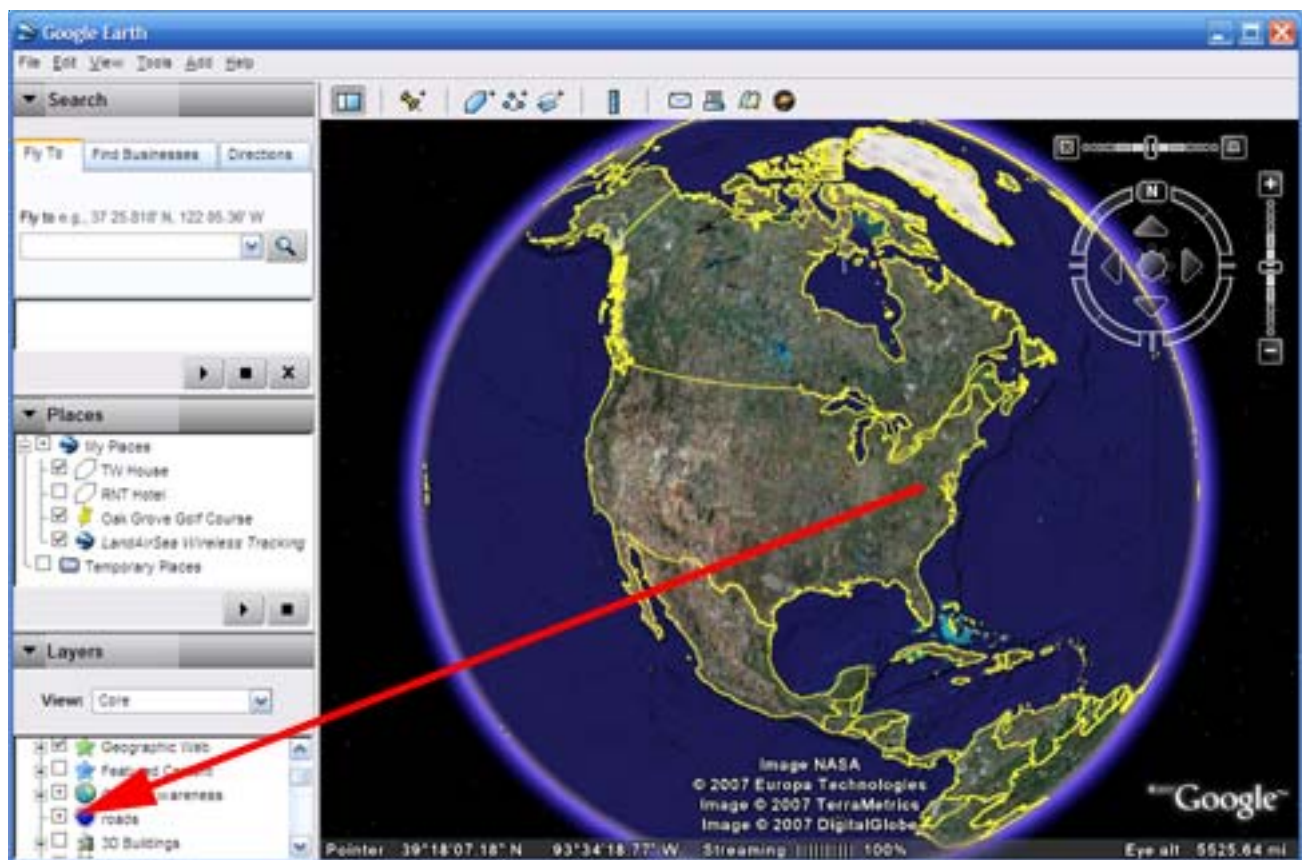
Section 1 - Downloading, Installing and Preparing Google Earth

The first step you need to do is to download the free Google Earth program. In your web browser, type in earth.google.com. You will see a button labeled Download Google Earth. Click it and follow the instructions for downloading and running the setup program.



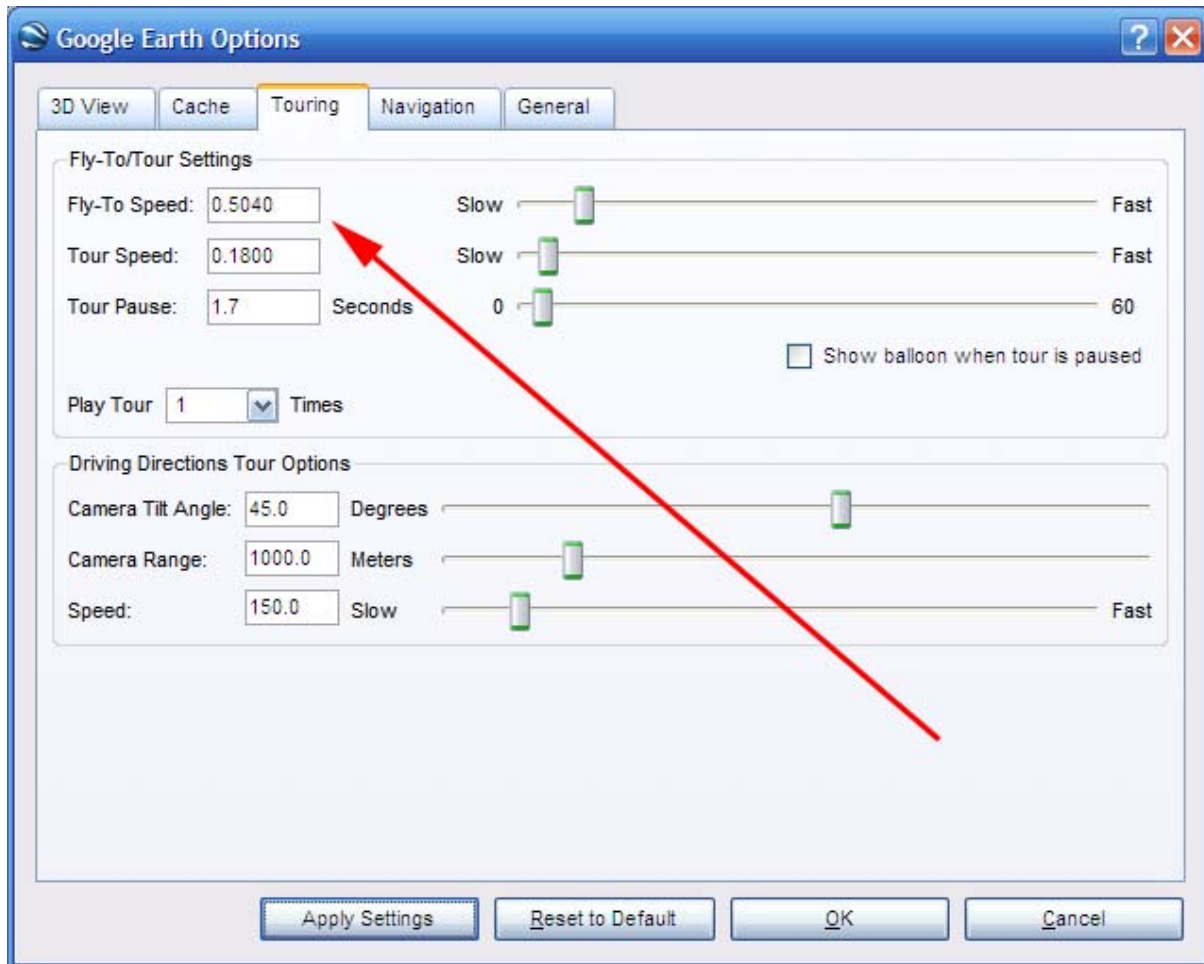
You will first be asked to agree with Google terms and conditions. If you agree, click agree. Then you will see a window similar to what you see to the left. Click Run.

Now just follow the Google Earth installation instructions. When you are finished, Google Earth should launch. If not, there should be an icon on the desktop that you can double click on.



See the image of Google Earth on the previous page. You want to check the checkbox labeled “Roads”. It is also your preference to check any of the other Google Earth layers that you may be interested in.

Under Tools | Options and the Touring Tab. Make sure your Fly-To Speed is set to be around 0.5000.



Your basic Google Earth installation and settings are now ready to use with the LandAirSea 8100. Proceed to Section 2 - Running the UT Wireless program for the first time.